

New from Stampin' Up!

Smooch SPRITZ™

Pearlized Accent Spray

Use on cards, scrapbook pages, chipboard, wood and more...

Tips:

For best results, spray six to ten inches from project. For a heavier application of color, spray closer to the project.

Before each use, shake vigorously until all particles are mixed. The sprayer can clog if particles get sucked up into the tube. Spray in direction of arrow as viewed on nozzle top.

To speed dry time, heat with a heat tool.

If ink dries outside the nozzle, remove the nozzle and submerge in household cleaner (such as Windex or 409), for 20 minutes. Rinse, replace the nozzle, shake well and spray.

To eliminate overspray that can soil work areas, use with the Color Catcher™.

Acid free

Techniques:

Layer colors by spraying a small amount of two different colors onto your project. Start with a lighter color and end with a darker color.

Build color by spraying several thin coats. Allow to dry between coats.

Spray chipboard and embellish with a coordinating Smooch™ color.

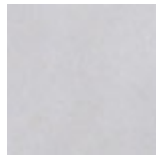
Spray a background on card and pages. When dry, stamp images.



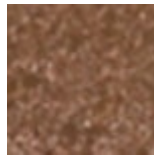
Gold Glow



Silver Foil



Vanilla Shimmer



Log Cabin



Smooch Spritz™
Use these pearlized accent sprays to add a splash of color to your projects. They come in a ready-to-use spray applicator. Layer thin coats of different colors for added dimension. Use our heat tool to speed drying time. Sprays are great for cards, scrapbook pages, chipboard, and more! Acid free. .37 oz.

	118770 Gold Glow	\$4.95
	118771 Silver Foil	\$4.95
	118772 Vanilla Shimmer	\$4.95
	119921 Log Cabin	\$4.95



Color Catcher
This useful Color Catcher™ protects your work area from ink overspray when using our Smooch Spritz or Color Spritzer Tool. Made from corrugated cardboard. Easy to assemble; compact and portable. 1 per package. Dimensions once open: 10" x 10" x 10".

121093	Color Catcher	\$5.95
--------	---------------	--------